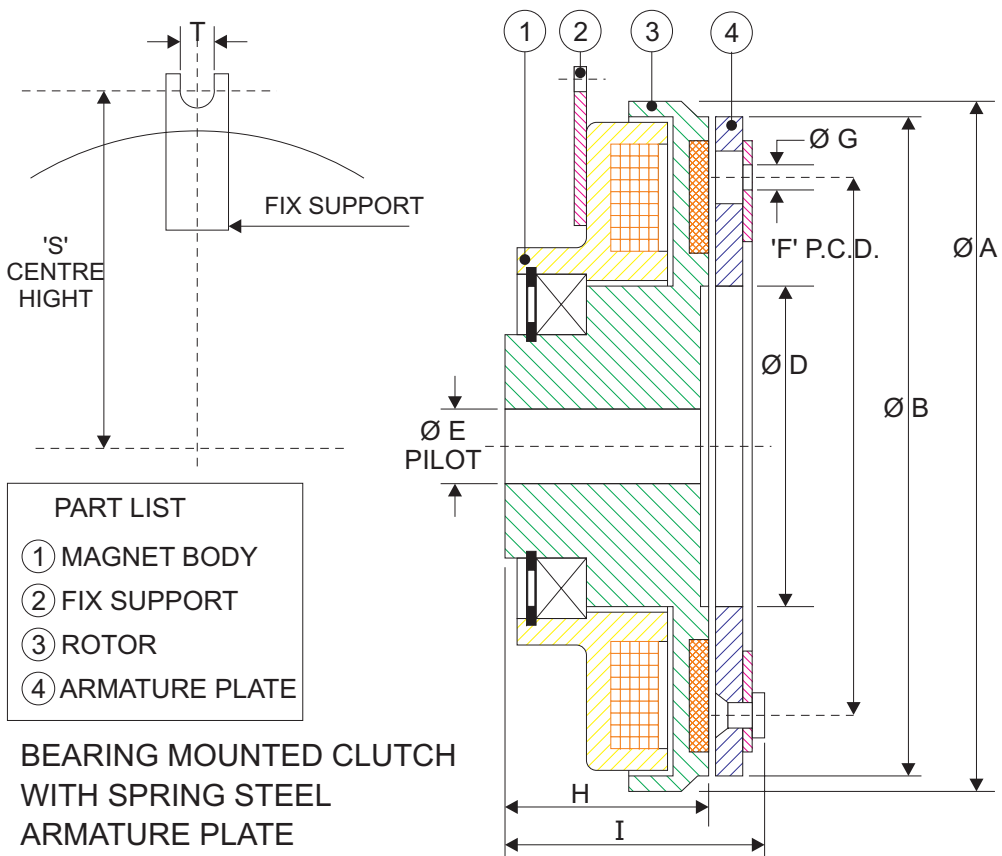
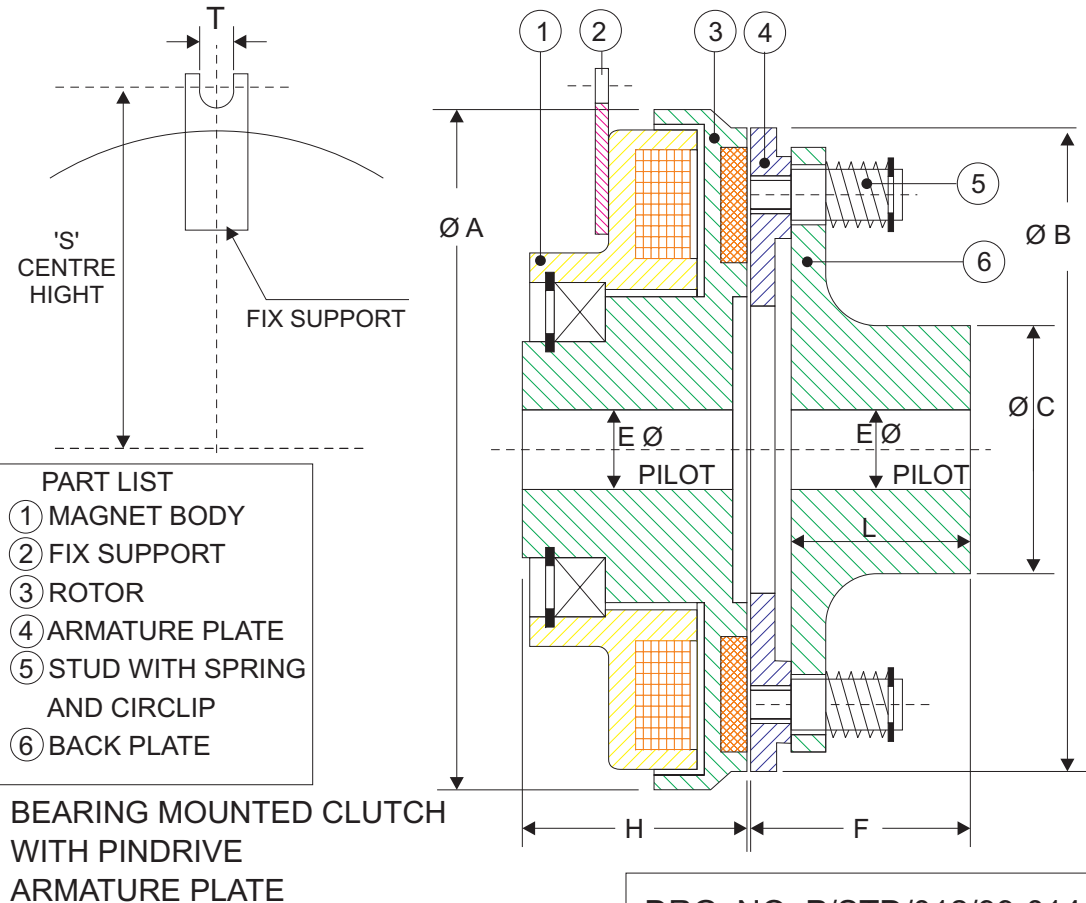


P SERIES STATIONARY COIL BEARING MOUNTED CLUTCHES



DRG. NO. P/STD/012/99

MODEL 'P'	TECH DATA		ARMATURE FIXING		Ø G	F P.C.D.X NO OFF	Ø D	Ø E MAX	H	I	T	CENTRE HIGHT 'S'
	TORQUE KG.M.	WATTS 24V.DC	Ø A	Ø B								
63	0.5	12	67	63	4.1	46X3	35	17	41.5	48	4.1	37
80	1.5	15	85	80	4.1	60X3	41.5	20	43	50	4.1	46
100	3.0	20	107	100	5.1	76X3	51.5	30	53	61	4.1	57
125	5.0	35	135	125	6.1	95X3	61.5	35	55	64	4.1	71
160	10.0	45	170	160	8.2	120X3	79.5	45	63	76	8.1	93
200	24.0	50	214	200	10.2	158X3	99.5	60	74	93	8.1	113
250	35.0	60	267	250	12.2	210X4	124.0	80	81	98	8.1	139



DRG. NO. P/STD/012/99-014

MODEL 'P'	TECH DATA		Ø A	Ø B	Ø C	Ø E MAX	H	F	L	T	CENTRE HIGHT 'S'
	TORQUE KG.M.	WATTS 24V.DC									
63	0.5	12	67	63	27	17	41.5	20	14	4.1	37
80	1.5	15	85	80	40	22	43	35	30	4.1	46
100	3.0	20	107	100	42	30	53	35	26	4.1	57
125	5.0	35	135	125	50	40	55	40	30	4.1	71
160	10.0	45	170	161	65	50	63	50	40	8.1	93
200	24.0	50	214	200	100	65	74	55	43	8.1	113
250	35.0	60	267	252	105	80	81	70	53	8.1	139