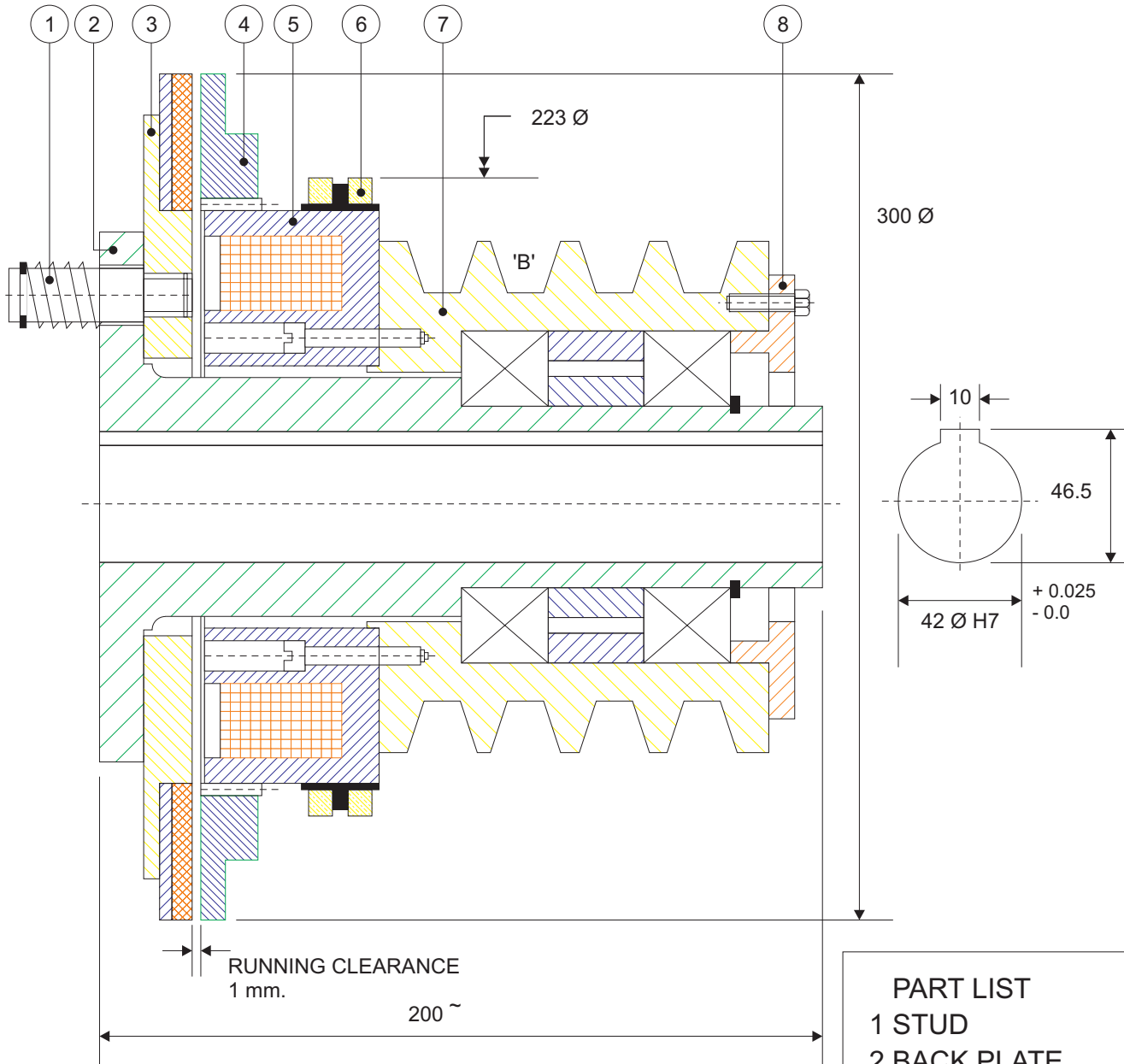


Pulley drive mounting arrangement for clutch and brake



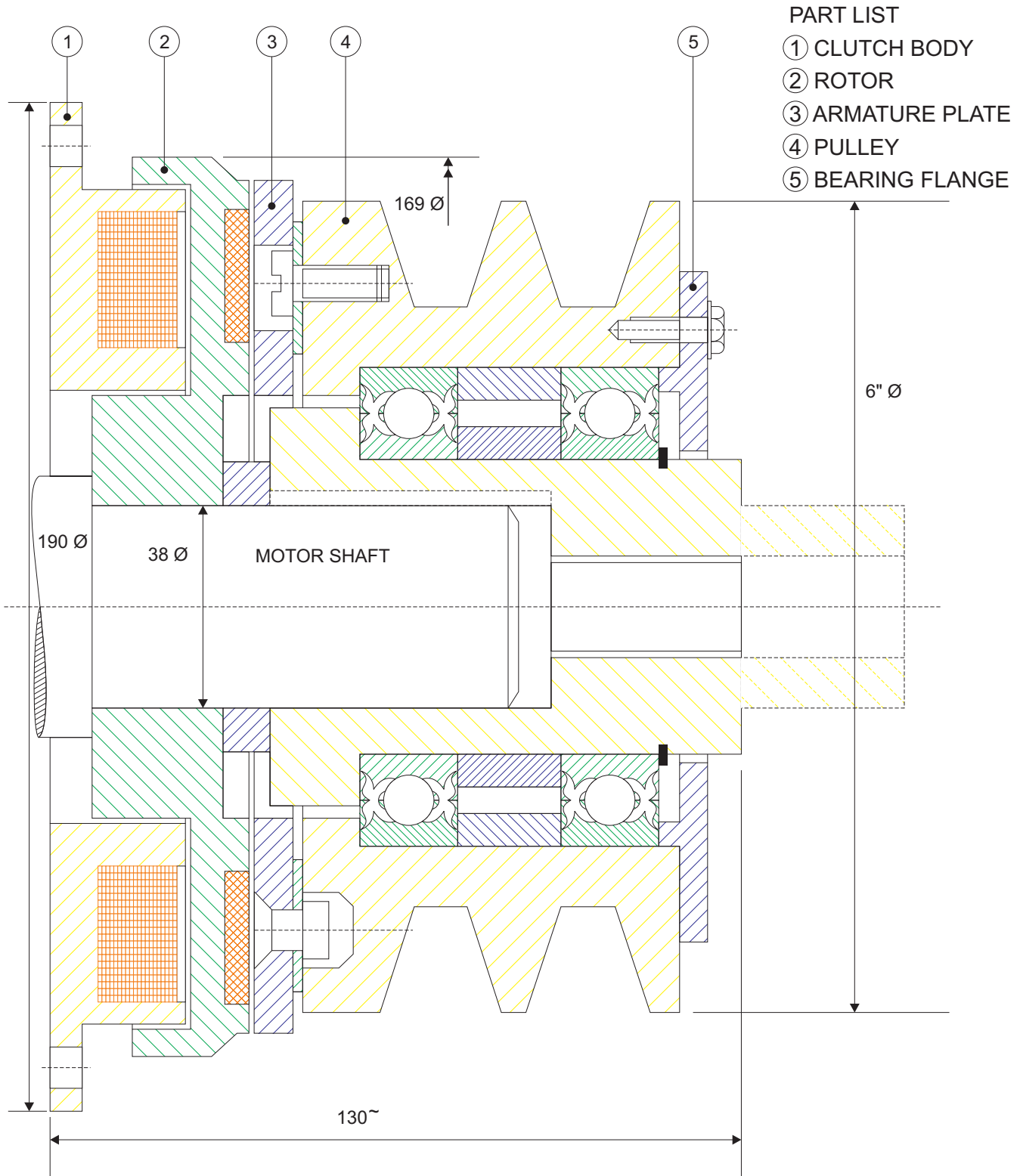
'B' SECTION, 4 GROOVE, 160 Ø PULLY

BEARING NO - 6014
OIL SEAL - SE - 118
EXT. CIRCLIP - 70 Ø

PART LIST

- 1 STUD
- 2 BACK PLATE
- 3 ARMATURE PLATE
- 4 THREADING RING
- 5 CLUTCH BODY
- 6 SLIPRING
- 7 PULLY
- 8 FLANGE

Pulley drive mounting arrangement for clutch and brake



Sectional view of Vistar - 300 pulley drive clutch is shown at the top of this page. (Armature plate outer diameter and threading ring outer diameter is 300 mm.)

Next picture shown is a Sectional view of P - 160 (P series) pulley drive clutch. (Clutch body outer diameter is 190 mm.)

Whenever driver shaft and driven shaft are parallel to each other (Normally driver shaft axis and driven shaft axis is in one line only), pulley drive mounting arrangement is used. Lot of space can be saved by adoption pulley drive mounting arrangement. Please note that chain sprocket or gear can also be used instead of pulley.

Following of our product series can be used with pulley drive mounting arrangement,

P series
Vistar series
Sakar series

For more information on pulley drive mounting arrangement for clutch and brake, kindly contact us.