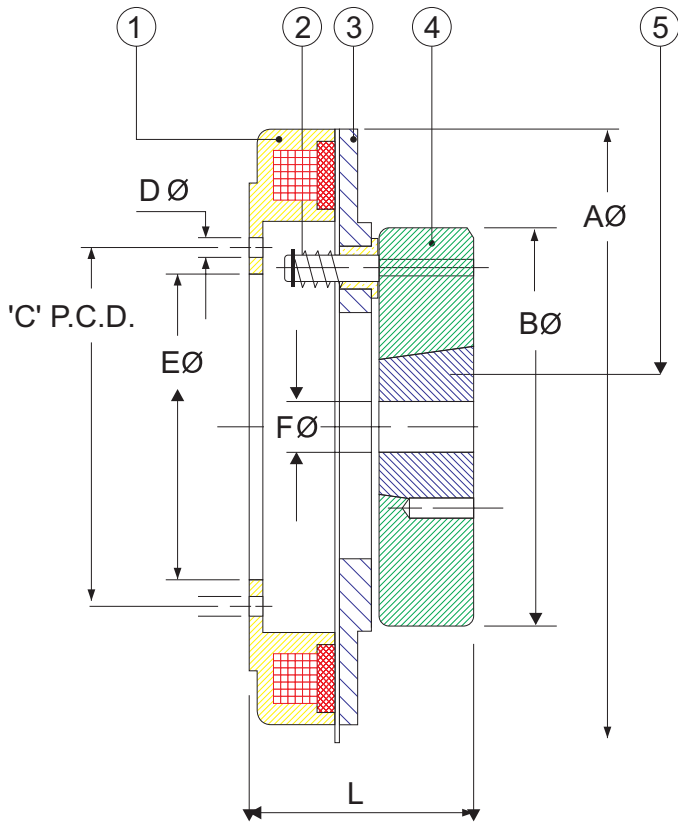
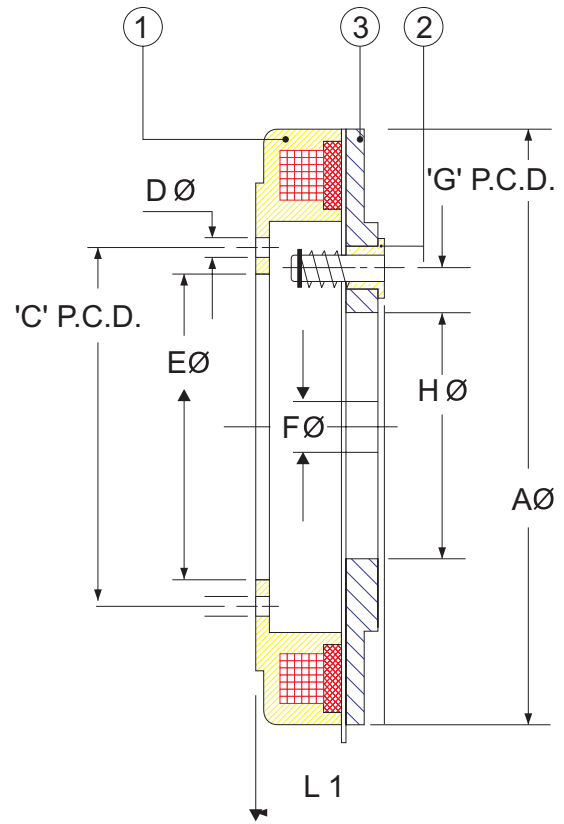


SAKAR SERIES INTERNAL MOUNTING BRAKE



INTERNAL MOUNTING BRAKE
ARMATURE WITH TAPER LOCK

DRG. NO. SB / 025 / 99



INTERNAL MOUNTING BRAKE
ARMATURE WITHOUT TAPER LOCK

DRG. NO. SB / 026 / 99

MODEL	WATTS AT 90 V.D.C. MAX.	TORQUE KG.M.	A Ø	B Ø	'C' P.C.D.	D Ø X NO.OFF	E Ø	F Ø MAX.	'G' P.C.D.X NO.OFF.	H Ø	L	L1	
SAKER-500	40	5	129	5"	2 ¹ / ₁₆ "	³ / ₁₆ " X 8	2 ³ / ₈ "	1 ¹ / ₄ "	3 ⁷ / ₈ " X 3	2 ¹¹ / ₁₆ "	80	42	
SAKER-825	40	15	209	4 ⁵ / ₈ "	4 ¹ / ₄ "	¹¹ / ₃₂ " X 6	3 ¹ / ₂ "	1 ⁵ / ₈ "	3 ⁹ / ₁₆ " X 3	2 ⁹ / ₁₆ "	83	45	
SAKER-1000	40	30	255	6 ¹ / ₄ "	6 ¹ / ₈ "	¹¹ / ₃₂ " X 6	5 ³ / ₈ "	2 ¹ / ₂ "	5 ¹ / ₄ " X 3	4 ¹ / ₈ "	95	50	
SAKER-1225	40	60	311	6 ⁷ / ₈ "	7 ¹ / ₄ "	¹¹ / ₃₂ " X 6	6 ³ / ₈ "	2 ³ / ₄ "	5 ⁷ / ₈ " X 4	4 ⁵ / ₈ "	132	56	
SAKER-1525	40	100	380	9 ¹ / ₂ "	9 ³ / ₄ "	¹¹ / ₃₂ " X 12	9"	3"	8 ¹ / ₂ " X 4	7 ³ / ₃₂ "	136	59.5	

PART LIST

- ① MAGNET BODY
- ② STUD WITH SPRING
- ③ AND CIRCLIP
- ④ DRIVING HUB
- ⑤ TAPER BUSH
- ⑥ BRASS BUSH

NOTE

ORIGINAL DIMENSIONS ARE IN INCHES
WE PROVIDE NEAREST METRIC DIMENSIONS
WHEREVER POSSIBLE